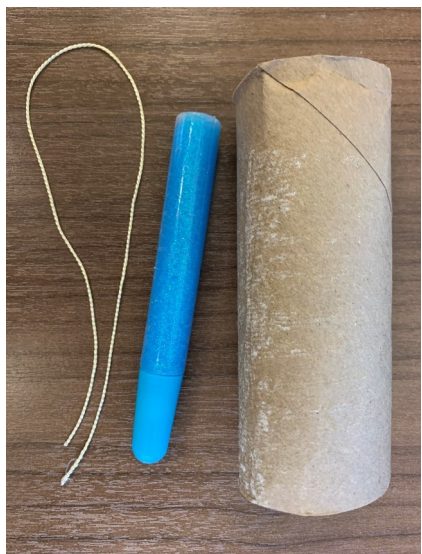


TOILET PAPER ROLL SNOWFLAKE



Supplies included:

Empty paper towel/toilet paper roll
Glitter glue pen (assorted colors)
String for hanging

Additional supplies needed:

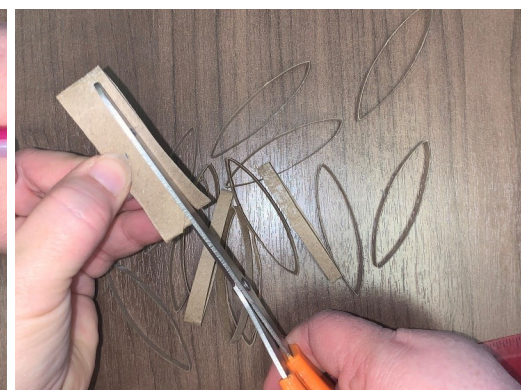
Hot glue gun & glue sticks
Ruler
Pencil
Scissors
Paint (optional)



Crafting instructions created by
Stephanie Coil
Programming Specialist
Way Public Library
Perrysburg, Ohio

Step 1

Flatten the empty paper towel/toilet paper roll. Using a ruler to measure, mark the roll every 1/4 inch. Cut roll into pieces. (From a 4 1/2 inch toilet paper roll I was able to get 18 pieces which is how many pieces you need to make this snowflake.)



Step 2

Hot glue together two pieces of toilet paper roll at the side and end. Do that for three sets of two. Connect those three sets of two, creating the nucleus of your snowflake.



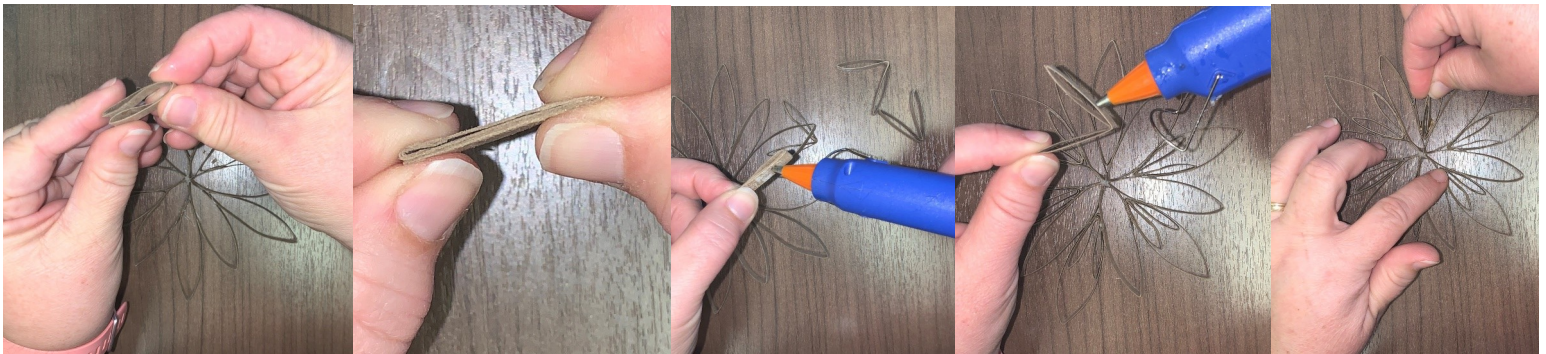
Step 3

Add another piece of toilet paper roll between each branch of the nucleus.



Step 4

Fold six pieces of toilet paper roll in half. Insert the folded pieces inside the pieces you added in **Step 3** by hot gluing the folded end and attaching inside each piece.



Step 5

If you would like to paint your snowflake, this is the time to do it! Otherwise add some glitter glue for embellishment. Let dry. Attach a string to hang your snowflake. ENJOY!

